



# CORPORATE PUBLICITY

Corporate Album · Publicity and Introduction · Business Promotion

[www.tengdimc.com](http://www.tengdimc.com)

# CATALOG



## 01 Company profile

/3-6

Helping Customers: Cost Savings, Increased Productivity, Improved Production Environment

## Scope of business 02

/7-9

TENGDI mainly exports various equipment and related accessories required by steel pipe producers and steel processing plants

## 03 Product introduction

/10-17

Professional equipment manufacturer: production of tube mills, slitting machines, fixed-length machines, consumables, etc.

## Team and Honors 04

/18-20

Professional organizational structure, experienced sales team, highly skilled research team, efficient brand operation team



# COMPANY PROFILE

Professional equipment manufacturer: production of tube mills, slitting machines, fixed-length machines, consumables, etc.





# COMPANY PROFILE



Shijiazhuang Tengdi Machinery Co., LTD., integrating scientific research, production and sales, has been committed to providing reliable products and services for global customers since its establishment. Our company mainly exports all kinds of equipment and related accessories demanded by steel pipe producers and steel processing factories such as ERW pipe mill, slitting line, cut to length line, cold rolling mill, overhead crane, gantry crane, etc. Over the years of development, our team is experienced in negotiation, able to quickly and accurately understand the specific needs of foreign investors. We can meet the diverse needs of foreign investors using our flexible integrated capabilities. We have won the user's praise and gradually became one of the major suppliers of equipment procurement in China to overseas market.

The rapid development of steel processing technology in China provides an environment for independent technical innovation. Based on the advanced technology at home and abroad, TENGDI' s engineers have designed single equipment with simple operation and easy maintenance so as to provide customers production line with low investment and high return.

# COMPANY PROFILE

## 2004

Broaden domestic market

Follow the predecessors to sell welded pipe equipment to 34 provinces across the country, promoting the sustainable development of China's steel pipe manufacturing industry.

## 2008

Fully enter international business

Established Hong Kong Jinbo International Trade Co., Ltd. and entered the international trade industry.

## 2011

Scale up and inject new teams

Since then, a new business and operation team has been established, and Tengdi Machinery has been formally established.

## 2021

Deep plowing in the industry

Set up a network operation team to strengthen close cooperation with old customers. Enhance brand influence.

## 1999

First entry into the steel pipe industry

The founder entered the steel pipe industry, and later became a member of the early technical research team of China's welded pipe equipment industry.



# COMPANY PROFILE



Pioneering and innovation, quality assurance, adhere to the diversification of varieties, the standardization of quality, and the integration of services. To provide customers with high-quality, diverse specifications of products and considerate service



Accompany customers from all over the world to visit, and learn the advanced production experience of domestic large and medium-sized steel pipe factories from multiple dimensions such as increasing production capacity, optimizing production line staff allocation, and reducing production costs.

Regularly visit customer factories, analyze each project according to the actual situation, and find the best solution.



Help customers save costs, increase productivity, and improve the production environment.



Integrity-based, reputation-oriented, adhere to product quality and service quality as the lifeline of the enterprise, on the basis of maintaining good cooperative relations with the same industry and major brother companies, develop a broader space, keep pace with the times, and look forward to the future .





# SCOPE OF BUSINESS

TENGDI mainly exports various equipment and related accessories required by steel pipe producers and steel processing plants



# SCOPE OF BUSINESS

## Tube Mill

Models include, stainless steel tube mill, ERW tube mill, spiral welded pipe production line, etc. Diameter specifications ranging from 8mm-3000mm. Non-standard customization according to different needs.

## Forming Machine

The production specifications of the equipment we produce can be produced from small-sized warehouse shelves, photovoltaic brackets, cable trays, CZ-shaped steel to large-sized high-strength steel structures.

Tube Mill

Forming Machine

Strip Processing Equipment

Auxiliary machines & Spares

## Strip processing equipment

Types include: fixed-length machines, slitting machines, cold rolling mills, pickling galvanizing and color coating equipment, etc.

## Auxiliary machines & Spares

Auxiliary machines: uncoiler, hydraulic testing machine, high frequency welding machine, looper, automatic baler, etc.

Spare parts: rolls, saw blades, magnetic bars, bearings, etc.





## Scope of business——Corporate Services

### Warranty Service

All TENGDI equipments have warranty service, and the service period is one year.

**02**

**Warranty Service**

**01**  
**Customized Program**

### Non-standard

From auxiliary machines to custom selection of components, TENGDI manufactures equipment according to your choice. And also have color customization and OEM service.

**03**  
**Engineer One-to-one Service**

### Exclusive Engineer Customer Service

Each customer will be equipped with a dedicated engineer customer service, online remote 24h answering questions. One-to-one guidance.

**04**  
**Training Services**

### Field Visit

The organization regularly visits customers in various countries, conducts on-site inspections, and conducts learning and training for customers' factory workers according to customer feedback.

**05**  
**Optimization Service**

### Optimizing Efficiency, Cost, Quality

Observe the existing production lines of current customers, help customers improve efficiency, reduce costs and improve quality.

**06**  
**Logistics Services**

### Logistics Services

Optimal route delivery, reduce delivery cycle. Reduce time consumption. Enhance Customer Experience



# Product introduction

Please enter details here Please enter details here Please enter details here Please enter details here Please enter details here Please enter details here Please enter details here



## Product introduction

### Tube Mill

TENGDI tube mills strictly abide by production standards from assembly to delivery. Before the equipment leaves the factory, quality inspection is carried out by professional quality control engineers, and the factory can only be shipped after reaching the standard.



### Spiral Welding Pipe Equipment

TENGDI is customized according to customer's production specifications, with a diameter of up to 3500mm and a thickness of up to 40mm. It is mainly used for gas-liquid transportation pipelines and construction pipelines.

### ERW Tube Mill

Specifications: diameter 8mm-630mm, thickness 0.3mm-20mm. Mainly used in fire protection, agricultural irrigation, construction, gas-liquid transportation, steel structure and other industries.

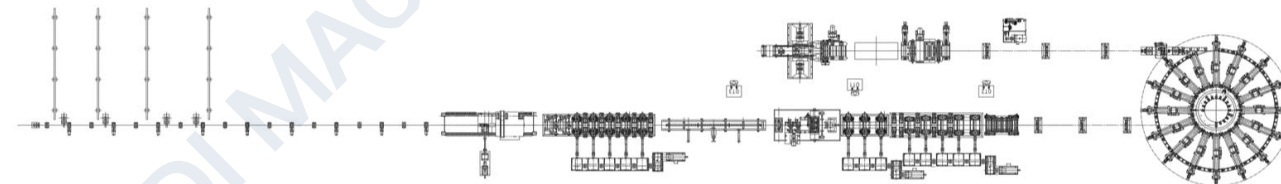
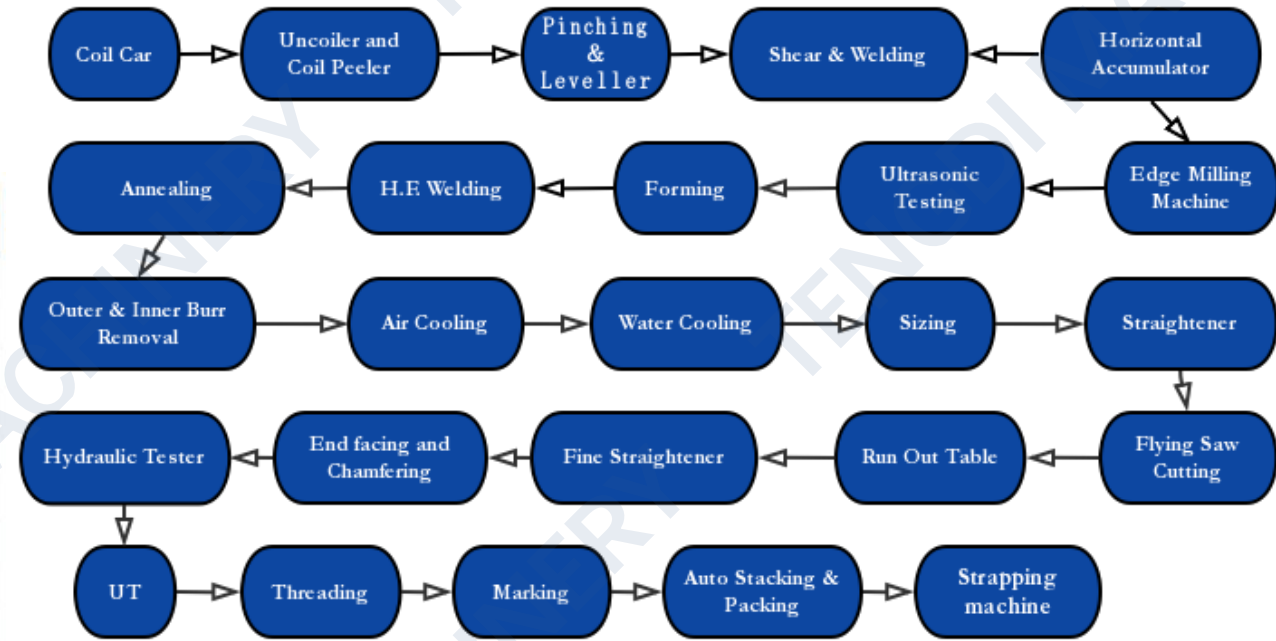


# Product introduction—Tube Mill—Flow chart and equipment parameters



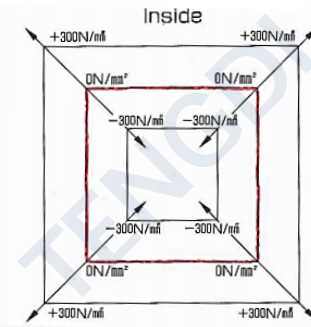
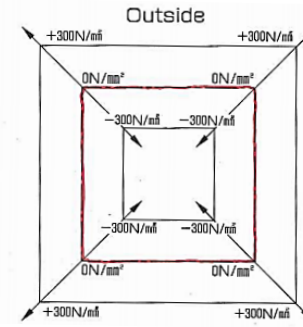
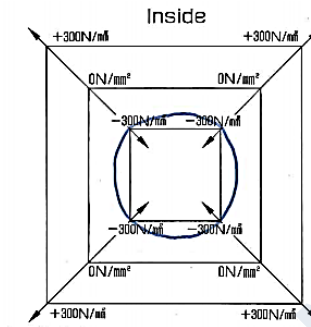
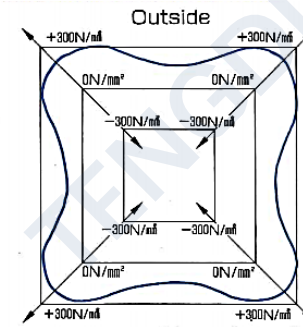
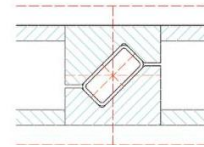
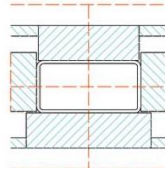
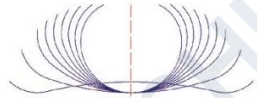
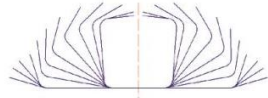
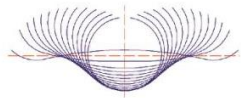
This series includes high-grade oil casing and oil and gas transmission pipe forming process) units, mechanical steel pipe units, ordinary fluid pipe units and small size and large wall thickness straight seam welded pipe production lines.

Pipe Line Size	Round Pipe	Square/Rectangular	Pipe Thickness	Producing Speed
	(mm)	(mm)	(mm)	(m/min)
HG20	Φ8-Φ12	6*6-10*10	0.3-1.2	80-120
HG32	Φ10-Φ32	8*8-25*25	0.4-2.0	80-120
HG50	Φ12-Φ50	10*10-40*40	0.5-3.0	60-110
HG60	Φ20-Φ76	15*15-50*50	0.8-3.5	60-110
HG76	Φ25-Φ76	20*20-60*60	1.2-4.0	60-90
HG89	Φ32-Φ89	25*25-70*70	1.5-4.5	60-90
HG114	Φ45-Φ114	35*35-90*90	1.5-4.5	40-80
HG140	Φ50-Φ140	40*40-110*110	1.5-5.0	40-60
HG165	Φ60-Φ165	50*50-130*130	2.0-6.0	30-50
HG219	Φ76-Φ219	60*60-170*170	3.0-8.0	25-50
HG273	Φ89-Φ273	70*70-210*210	3.0-10.0	20-50
HG325	Φ114-Φ325	90*90-250*250	4.0-12.7	15-40
HG377	Φ140-Φ377	110*110-300*300	4.0-14.0	15-40
HG406	Φ165-Φ406	130*130-320*320	5.0-16.0	15-30
HG508	Φ219-Φ508	170*170-400*400	5.0-16.0	15-30
HG630	Φ254-Φ630	200*200-500*500	6.0-19.0	10-25





# Product introduction—Tube Mill—Technical Features



## Fully automatic adjustment of rolls

A set of molds can produce pipes of various sizes, which are automatically adjusted by electric control, with high precision and fast roll changing speed.



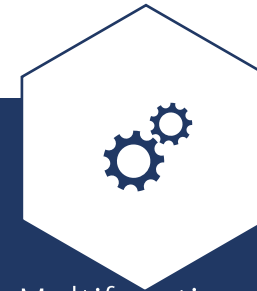
## 3rd Generation FFX Technology

It can greatly reduce the reserve of roll spare parts and reduce the cost of rolls by 80%, so as to accelerate the capital turnover and shorten the product development cycle.



## Cold-Hot Forming Process

It is applied to the sharp-angle square and rectangular tube mill, and its performance is stronger than that of ordinary cold-formed square and rectangular tubes. More used in steel structure industry.



## Multifunctional production technology

The same production line uses a universal rack to produce different products, which greatly solves the problem of plant area.

# Product introduction——Spiral Welded Pipe Equipment



## Spiral Welded Pipe Equipment



### Product contains:

- Aluminum-magnesium alloy spiral welded pipe production line.
- Stainless Steel Spiral Welded Pipe Production Line.
- $\Phi 3000\text{mm}$  Extra Large Hydraulic Testing Machine.
- API Spiral Welded Pipe Production Line



### Specifications Range:

- Product specifications range from  $\Phi 25\text{mm}$  to  $3500\Phi\text{mm}$ , and are divided into general-purpose units and special customized units.





# Product introduction——Forming Equipment



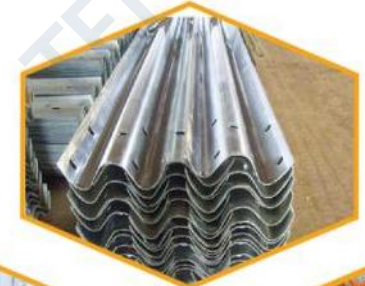
## Forming Equipment

- According to different products, cold-formed steel units are roughly divided into square tube units, sheet pile units and other units.
- The square tube unit mainly produces square and rectangular tubes. It adopts the direct forming process and is equipped with a high-frequency welding machine.
- The steel sheet pile unit is a unit specializing in the production of steel sheet piles, and adopts the segment-by-segment arc flexible forming technology.
- The steel sheet pile unit of our company has reached the world-class level.
- Other models can produce channel steel, C-shaped steel and many other types of steel by changing the rolls.



## Products involved in the industry

- Manufactured: commodity shelves, cable trays, photovoltaic supports, highway guardrails, corrugated steel, CZ steel, U-shaped steel for large steel structures, etc.



# Product introduction—Coil Processing Equipment

## CNC Uncoiling Slitting Production Line



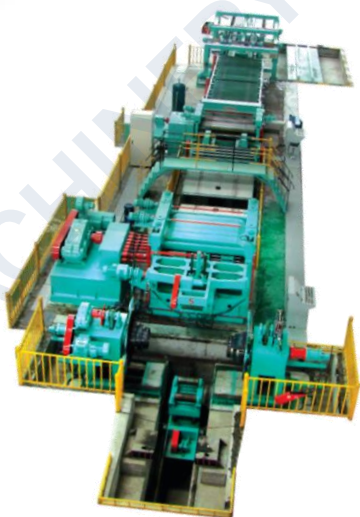
Model Specifications	0.3-3.0x800-2000mm
Processing Material	Cold-rolled sheet Galvanized sheet Stainless steel sheet Automotive sheet
Plate width	800-2000mm
Thickness	0.3-3.0mm
Roll Weight	20T
Production Line Speed	100-180m/min
Number Of Strips	30
Usable Area	24m*9m
Installed Capacity	300Kw

## CNC Uncoiling - Leveling - Cross Cutting - Production Line



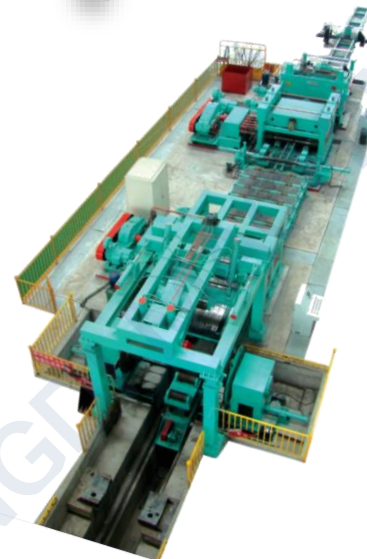
Model Specifications	0.3-3.0x800-2000mm
Processing Material	Cold-rolled sheet Galvanized sheet Stainless steel sheet Automotive sheet
Plate Width	800-2000mm
Thickness	0.3-3.0mm
Roll Weight	20T
Production Line Speed	10-80m/min
Cut Length Accuracy	±0.3mm
Usable Area	28m*9m
Installed Capacity	130Kw

## Hot Rolled Sheet Pickling Sheet Uncoiling-Leveling-Shearing-Stacking Line



Model Specifications	1-6x2000mm	1-6x2000mm
Processing Thickness	1-6mm	1-6mm
Width	900-2000mm	900-2000mm
Coil Weight	30T	30T
Cut Length Accuracy	±0.5mm	±1mm
Cut Length Range	1000-6000mm	1000-6000mm
Leveling Speed	0-60m/min	0-28m/min
Usable Area	40x10m	26x9m
Installed Capacity	240kw	110kw

## Hot Rolled Sheet Uncoiling-Leveling-Shearing-Stacking Line

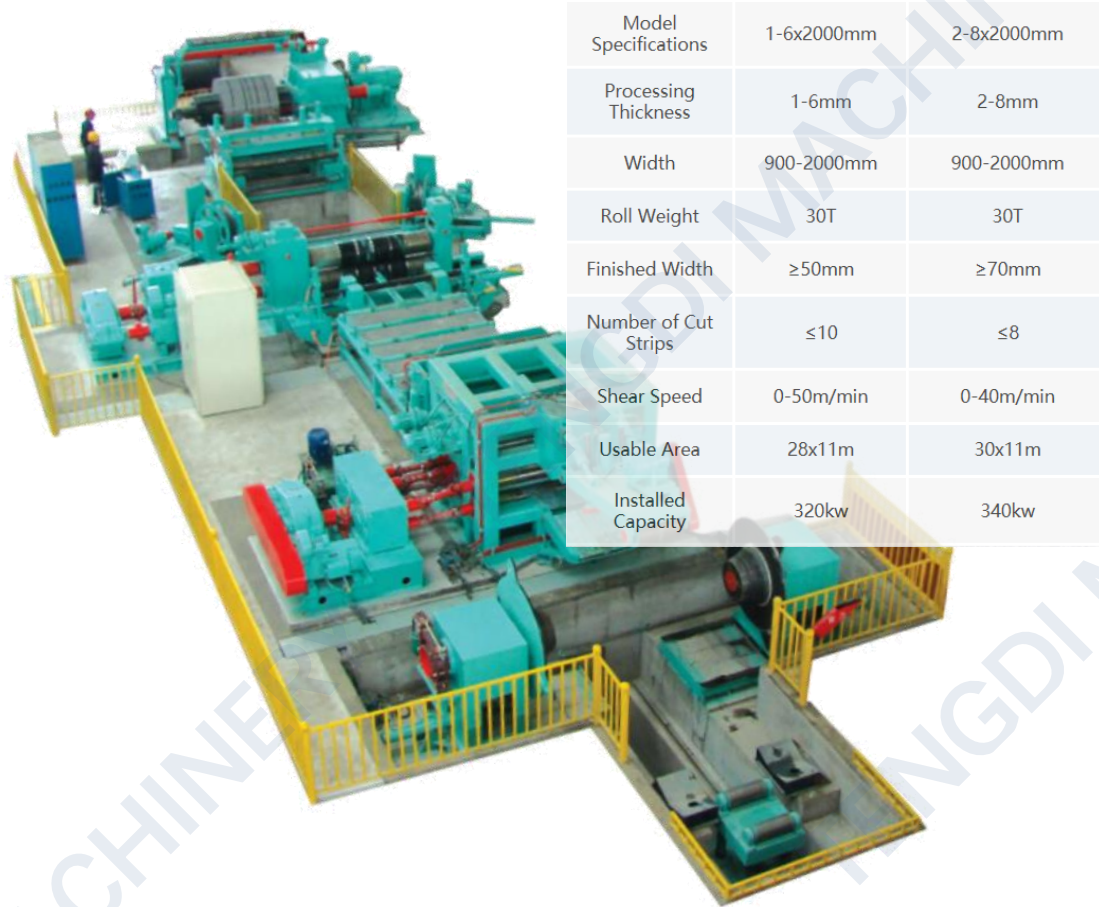


Model	2-8x2000mm	3-12x2200mm	4-16x2200mm
Processing Thickness (Q235 shall prevail)	2-8mm	3-12mm	4-16mm
Width	900-2000mm	900-2200mm	900-2200mm
Coil Weight	30T	35T	35T
Cut Length Accuracy	±1mm	±1mm	±1mm
Cut Length Range	1000-8000mm	2000-12000mm	2000-12000mm
Leveling Speed	0-28m/min	0-25m/min	0-25m/min
Usable Area	28x9m	35x10m	38x10m
Installed Capacity	140kw	220kw	280kw



# Product introduction—Coil Processing Equipment

## Hot Rolled Uncoiler - Slitting - Rewinding Line



Model Specifications	1-6x2000mm	2-8x2000mm
Processing Thickness	1-6mm	2-8mm
Width	900-2000mm	900-2000mm
Roll Weight	30T	30T
Finished Width	≥50mm	≥70mm
Number of Cut Strips	≤10	≤8
Shear Speed	0-50m/min	0-40m/min
Usable Area	28x11m	30x11m
Installed Capacity	320kw	340kw

## Hot Rolled Sheet - Uncoiling - Slitting - Rewinding - Production Line



Model Specifications	3-12x2200mm	4-16x2200mm
Processing Thickness	3-12mm	4-16mm
Width	900-2200mm	900-2000mm
Roll Weight	35T	35T
Finished Width	≥80mm	≥100mm
Number of Cut Strips	≤7	≤5
Shear Speed	0-30m/min	0-25m/min
Usable Area	35x11m	38x11m
Installed Capacity	480kw	650kw



### Other type of production line

- Stainless Steel Uncoiling-Leveling-Shearing-Stacking Line
- Hot-rolled sheet uncoiling - slitting - leveling - cross cutting - stacking - coiling production line



# Team and Honors

Professional organizational structure, experienced sales team, highly skilled research team, efficient brand operation team



# Team and Honors—Organizational structure



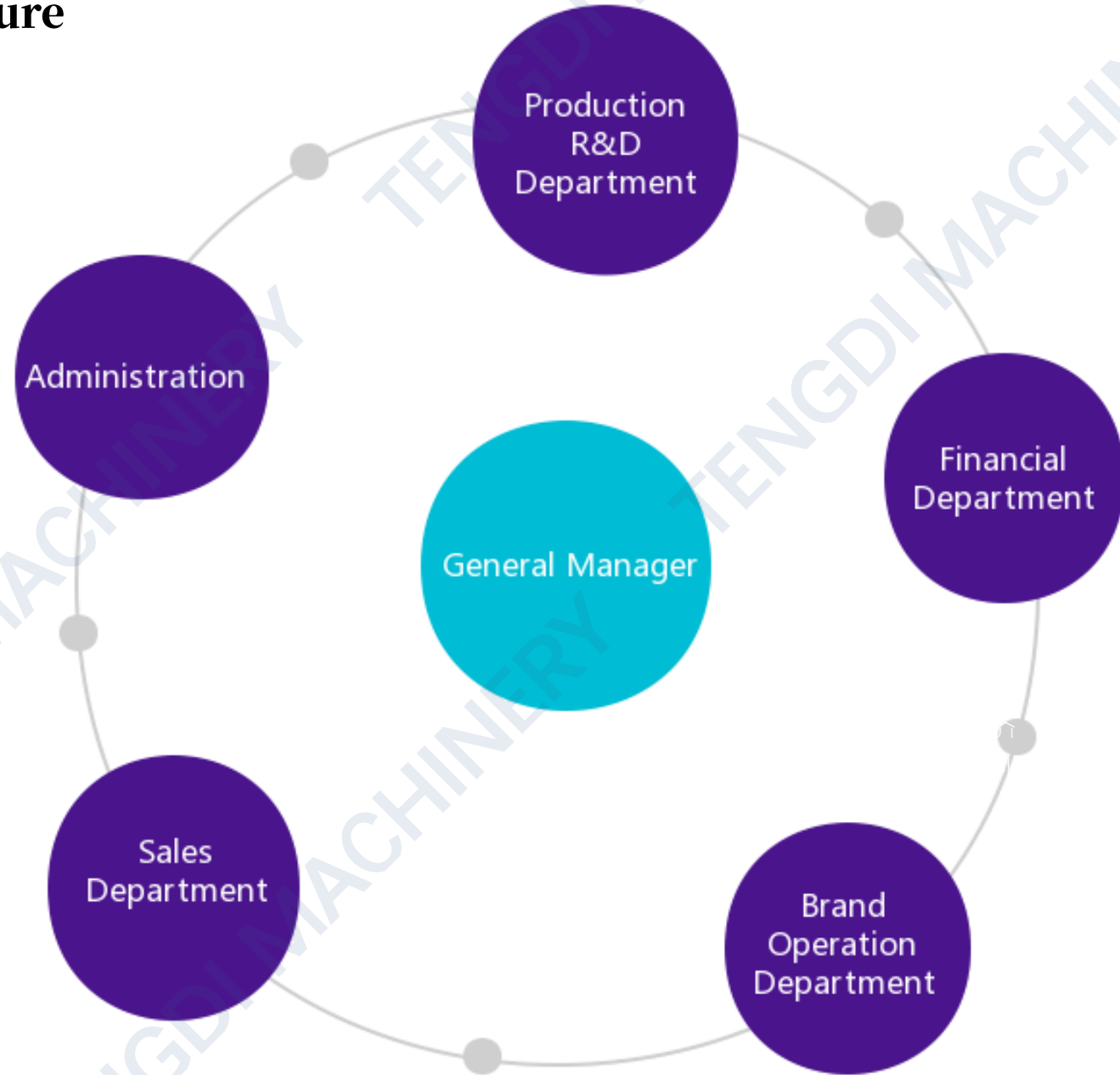
## Team and Honors

Professional organizational structure, experienced sales team, highly skilled research team, efficient brand operation team



Customer feedback

Timely response





# Team and Honors—Honors and Suppliers







**Thanks for watching**

[www.tengdimc.com](http://www.tengdimc.com)